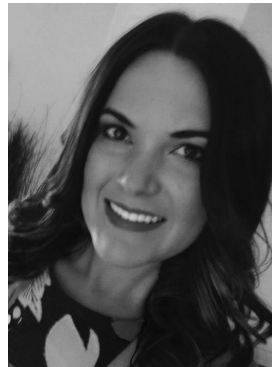


COURTNEY TERRELL

BBldg Surv

Associate

courtney@floreancigsmith.com.au



<i>Introduction</i>	Courtney has over 8 years of experience within the building industry working on various projects across all sectors.
<i>Roles</i>	Courtney's role at Floreancig Smith Building Surveyors as an Assistant Building Surveyor is to provide technical support and assistance to the team by assessing and managing various projects.
<i>Fields of Expertise</i>	Through her experiences in the construction industry Courtney has developed a defined knowledge and clear understanding of BCA performance provisions and statutory design compliance reviews. Proficient in the assessment of construction techniques & methodologies, Courtney is able to conduct compliance assessment to determine compliance with the National Construction Code (NCC) and various Australian Standards.
<i>Sector Specialisation</i>	Retail, Multiple Residential Apartments, Education, Office Buildings, Domestic, Health & Aged Care.
<i>Qualifications</i>	Bachelor of Building Surveying, Central Queensland University
<i>Professional Associations</i>	Australian Institute of Building Surveyors (AIBS)
<i>Likely Capacity to Provide the Service</i>	<p>Courtney's capabilities include preparing alternative solutions, modifications, dispensations and report and consent applications, ensuring positive outcomes for both clients and statutory authorities.</p> <p>Her considerable knowledge in building surveying functions enables the issuing of building permits, occupancy permits and final inspections and carrying out subsequent building inspections.</p>

relevant projects

<i>Commercial /Offices</i>	Preston Tram Workshop Re-development St. Georges Terrace, Perth Telstra Exchange- (Various Sites) NAB- 700 Bourke Street, Melbourne
<i>Retail</i>	South Morang Shopping Centre Speciality fit-outs (i.e. China bar, Bardot, Nova, ANZ, Westpac) ALDI stores- New stores and Fitouts
<i>Residential apartments</i>	Mason Point, 30A Oleander Street, South Morang Arcadia Apartments, 1344 Dandenong Road, Hughesdale Haus, 416 Smith Street, Richmond Miya, 37-39 Kerr Street, Fitzroy b@stkilda, 7 Belford Street, St. Kilda QV8- 22-24 Jane Bell Lane, Melbourne
<i>Audits</i>	JB HiFi Essential Safety Audits (Regional & Interstate) Victoria University Essential Safety Audits Monash University Essential Safety Audits
<i>Healthcare/ Educational/ Government Sector / Research</i>	Building Education Revolution - Economic Stimulus Package Rollout Ivanhoe Girls Grammar School- Parish Hall/ Regeneration Plant Austin Health- Transitional Support Unit Lyndbrook Aged Care Facility Warragul Aged Care Facility